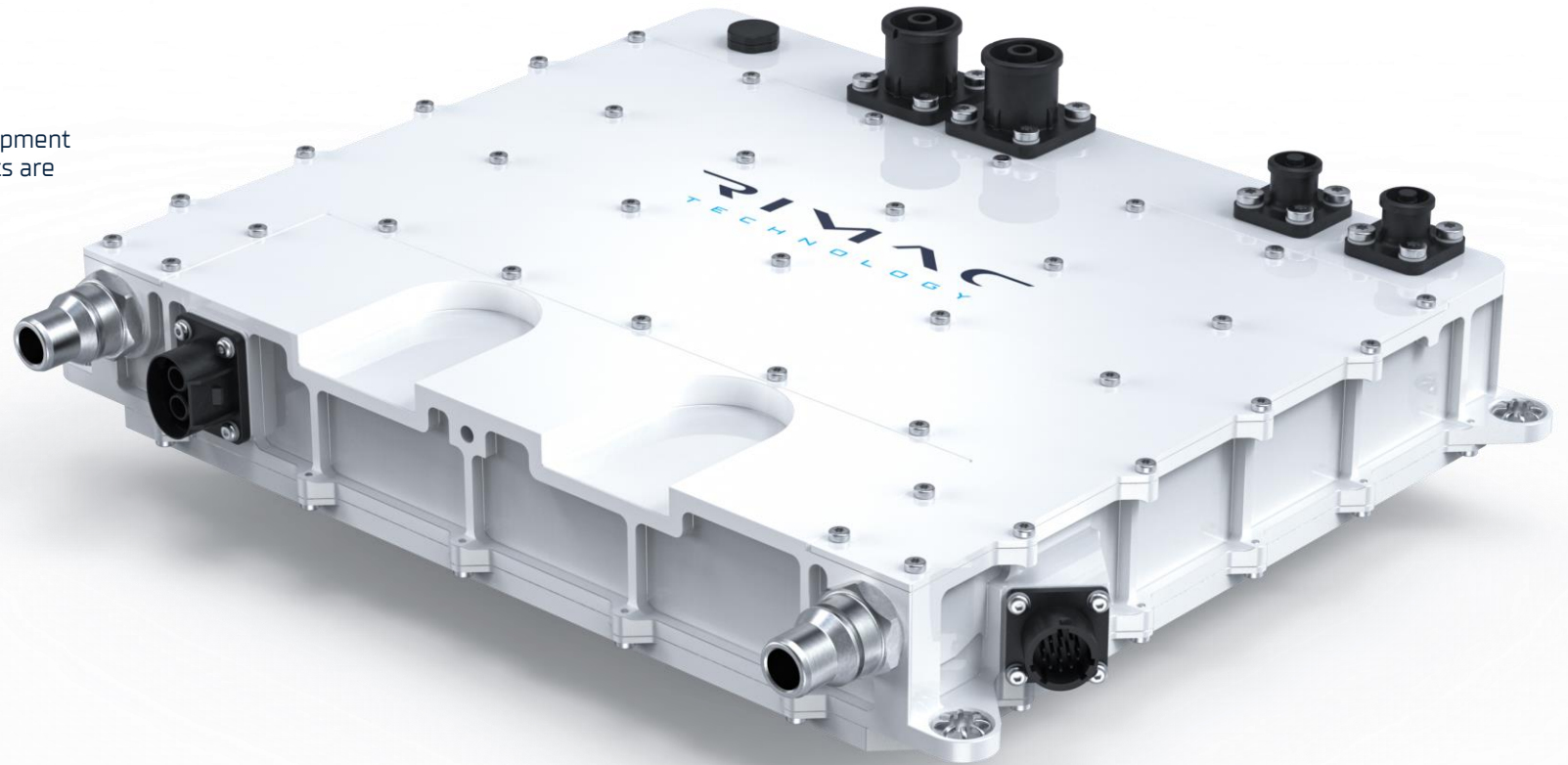
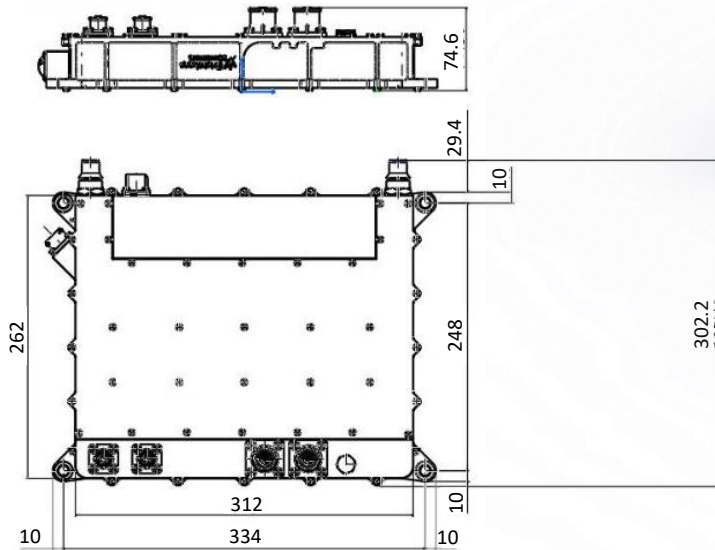


# DC/DC CONVERTER

WITH A HIGH PERFORMANCE ELECTRIC VEHICLE, COMES THE NEED FOR EFFICIENT VOLTAGE MANAGEMENT.

For this reason, our engineers put time and dedication into the development of advanced high voltage systems, making sure that these components are capable of handling a large range of voltages.



## DC/DC CONVERTER



Our DC/DC converter gives real-time control over output voltage and current, meaning that output power can be limited from zero to max power. Our converter has two DC/DC channels, one for 12V output and another for 48V output.

### BASIC SPECIFICATIONS

- › Dual Stage with 12V and 48V outputs
- › Full galvanic isolation between input and outputs
- › Input voltage range: 400-750Vdc
- › Output ranges: 3kW @ 12V; 4.5kW @ 48V
- › 12V power supply for logic (AUX)
- › Adjustable outputs voltages and currents in real time via CAN bus
- › Over temperature, overvoltage, overcurrent protection and short circuit protection, with detection via CAN

LEVEL OF CRITICALITY	ISO 26262 – QM
LV POWER SUPPLY – OPERATIONAL RANGE	8-16Vdc
CONTROL	CAN bus
COOLING	Water cooled
POWER SOURCE	12V power via Power Distribution Module
DURABILITY	Lifetime 10,000 hours / 5 years (failure rate 5%)
WARRANTY	3 years (failure rate 1%)
VOLUME	6.6l

### MAIN FEATURES

- › DUAL STAGE WITH 12V AND 48V OUTPUTS
- › FULL GALVANIC ISOLATION BETWEEN INPUT AND OUTPUTS

